



BOH SERIES INDUCTION COOKTOPS



Scan to Learn More

Integrate clean, safe, precise induction cooking to your kitchen with our BOH Series Induction Cooktops. Available in almost any configuration or power, our induction cooktops can either be placed right on an open countertop or seamlessly built-in to your countertop.

- Expertly welded in the USA, premium 304 stainless steel construction available in 4 or 6-zone, flat or step-up configurations, custom builds available.
- Powered by Spring USA MAX Induction 1800-3500W offering an energy-efficient alternative to traditional gas and electric cooking.
- Independently operated drop-in induction zones allow for easy removal, repair, or replacement --no technician or service calls needed.
- ENERGY STAR*, FCC, ETL, ETL-Sanitation to NSF-4, CETL, UL 197

Backed by the Power of Spring USA

Spring USA's line of induction ranges are guaranteed durable and reliable. Each and every range is expertly crafted to meet rigorous testing and performance standards.

We don't just guarantee it, we prove it with a **less than 1% failure rate** backed by an **overnight exchange warranty**.

*select models

View all Spring USA BOH Series Solutions
visit: springusa.com/boh-series

Contact:

(630) 527-8600 | www.springusa.com

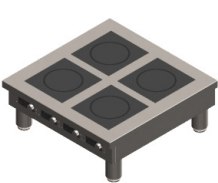
INDUCTION COOKING DESIGNED FOR YOU

Designed to industry-standard 36" or 48" widths and only 14"H with 4" stainless steel leveling legs, each cooktop can easily fit atop existing equipment like coolers, cabinets, work tables, and stations so you can maximize cooking space.

Independently controlled zones allow you to select power configurations that work for you and your kitchen.

PERFORMANCE ENGINEERED BY THE LEADERS IN INDUCTION

Spring USA MAX Induction, the first commercial induction cooktops to receive ENERGY STAR® certification*, offer up to 90% energy efficiency - far outperforming gas (35%) and electric (50%) units. Better energy transfer means less radiant heat in your kitchen, lower fuel use, and greater savings and convenience in back-of-house operations. Our exclusive SmartScan® technology & Automatic Pan Recovery provide more precise heating and greater control for kitchen staff.



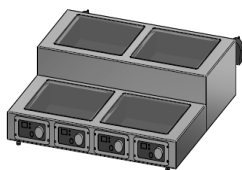
BOH-3500-4CTL



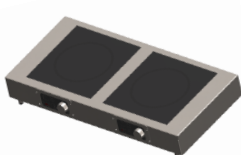
BOH-3500-6CTL



Zero-6 Cooktop



4-zone Step-up



2-zone Cooktop

MODEL	APPLICATION	WATTAGE	DIMENSIONS
BOH-3500-4CTL	4-zone, Countertop	3500W x 4	14"H x 36"W x 36"D (includes 4" legs)
BOH-3500-6CTL	6-zone, Countertop	3500W x 6	14"H x 48"W x 36"D (includes 4" legs)
CUSTOM BUILDS <i>Inquire</i>	2+ zone, flat or step-up, built-in or countertop	1800W - 3500W	Based on your unique requirements

*select models

View More: springusa.com/boh-series

