

## Double-Sided Self-Service Protector with Upper Shelf

### FINISH:

- ☐ Brushed Stainless Steel
- ☐ Clear Anodized Aluminum
- ☐ Powder Coat:
  - ☐ Black
  - ☐ Silver

RAL # \_\_\_\_\_

### GLASS (Clear Tempered):

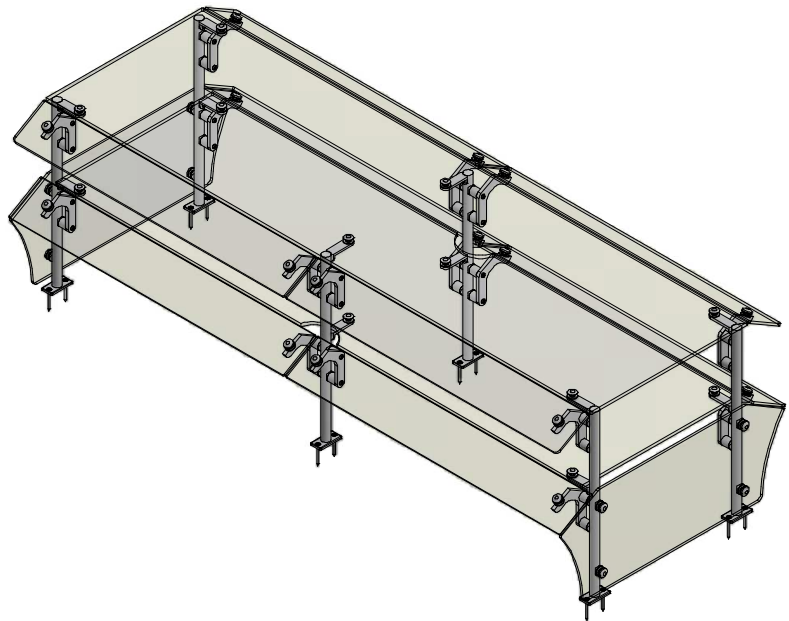
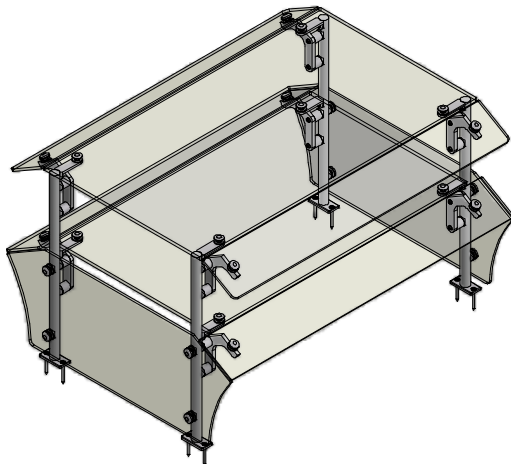
- ☐ 1/4" Clr Front - Std
- ☐ 3/8" Clr Front
- ☐ Frosted
- ☐ 3/8" Top - Std

### OPTIONS(\*):

- ☐ End Panel - LT
- ☐ End Panel - RT
- ☐ Light Fixture
- ☐ Warmer
- ☐ Shelf Kit

(\*) Not all options available on all models  
Contact factory for specific information

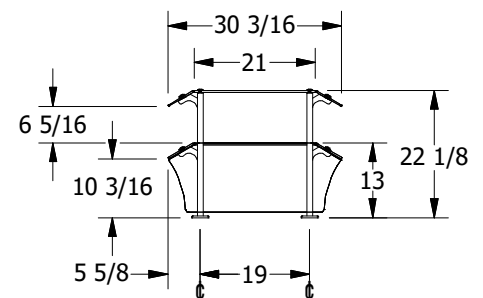
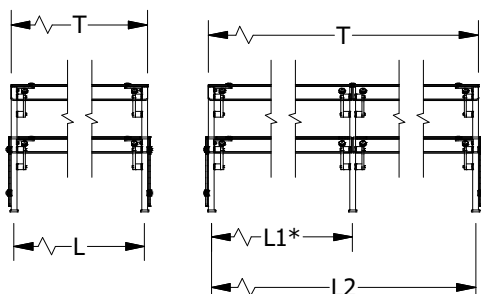
For Mounting Options see Mounting Hardware Guide



End panels are 1/4" clear tempered glass unless otherwise specified.

-Centerline Dimensions -  
L / L1 - 51 1/2" Max (1/4" Glass)  
- 63 1/2" Max (3/8" Glass)  
- 69 1/2" Max (1/2" Glass)

T = Top Panel in (1) Piece  
T - 108" Max



( \* - Middle support is centered unless L1 dimension is specified )