

Double-Sided Adjustable Self-Service Protector w/ Shelf

FINISH:

- ☐ Clear Anodized Aluminum
- ☐ Brushed Stainless Steel
- ☐ Powder Coat:
 - ☐ Black
 - ☐ Silver

RAL # _____

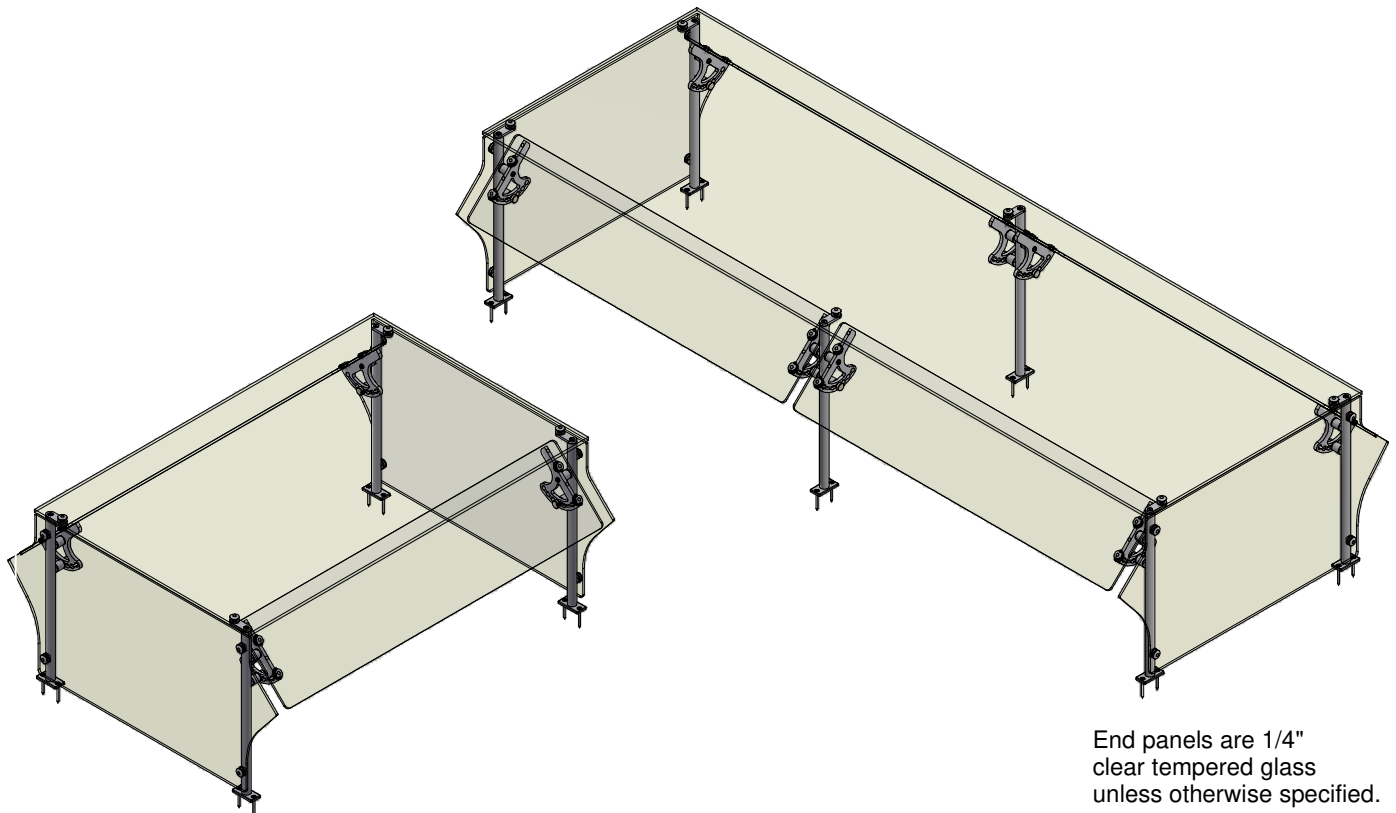
GLASS (Clear Tempered):

- ☐ 1/4" Front - Std
- ☐ 3/8" Front
- ☐ 3/8" Top - Std

OPTIONS(*):

- ☐ End Panel - LT
- ☐ End Panel - RT
- ☐ Light Fixture
- ☐ Warmer
- ☐ Upper Shelf Kit

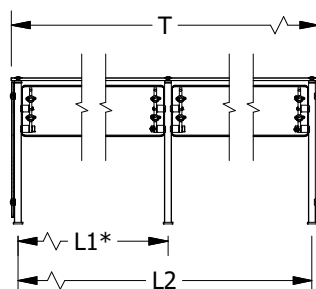
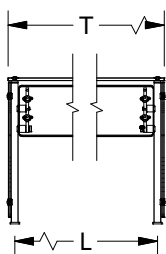
(*) Not all options available on all models
Contact factory for specific information
For Mounting Options see Mounting Hardware Guide



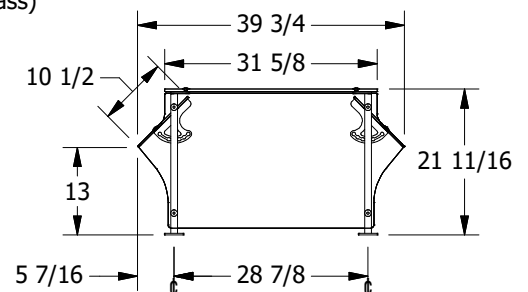
End panels are 1/4" clear tempered glass unless otherwise specified.

- Centerline Dimensions -
L / L1 - 51 3/4" Max (1/4" Glass)
- 63 3/4" Max (3/8" Glass)

T = Top Panel in (1) Piece
T - 108" Max

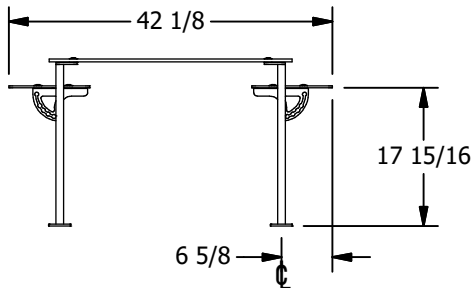
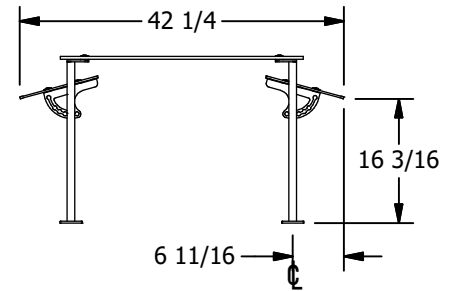
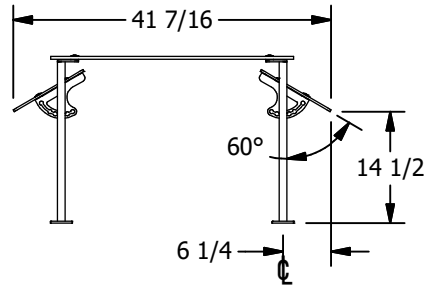
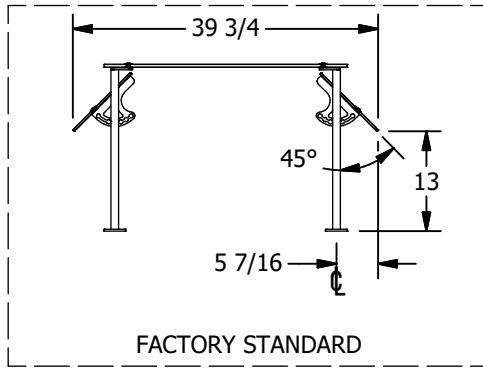


(* - Middle support is centered unless L1 dimension is specified)



Double Sided Adjustable Self-Service Protector w/ Shelf

GLASS SETTING - 1



GLASS SETTING - 2

