

How To Install The Electric Heating Element On A **Spring**_{USA} Heated Serving/Carving Station



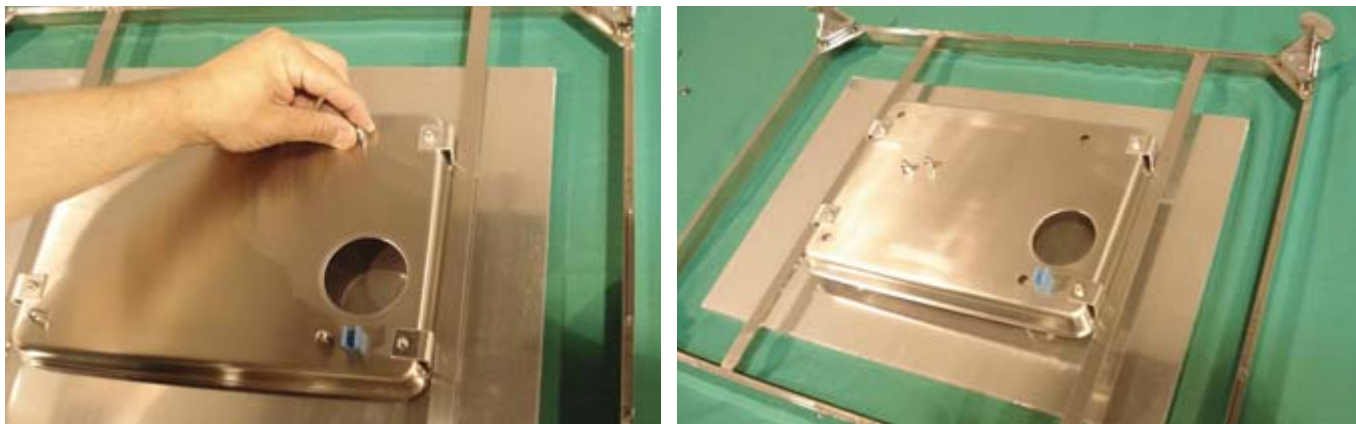
** Heat Lamps Sold Separately **



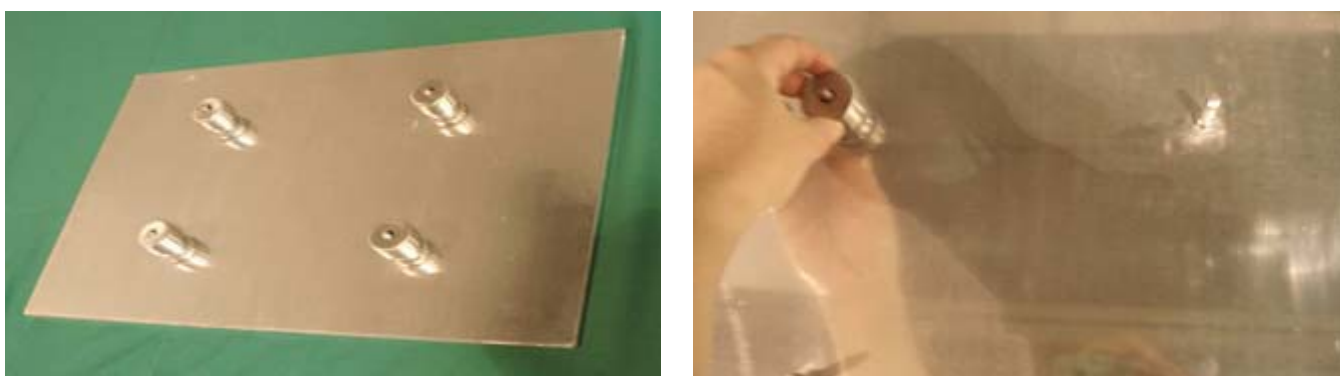
Spring_{USA}
www.springusa.com

800-535-8974

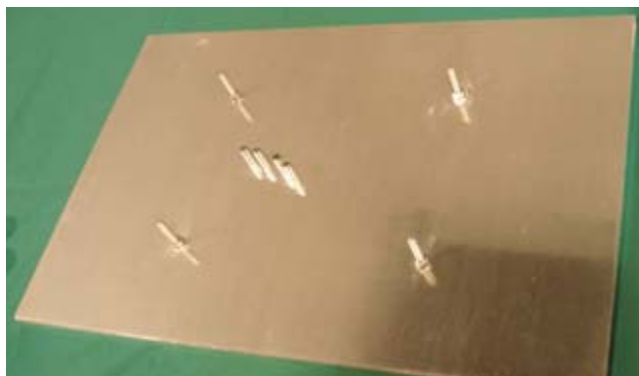
Turn the Carving Station over and remove the thumb screws (there are a total of four screws)



Remove the Carving Station frame and set aside. Remove the four (4) round, thick cylinders and set aside.



There will be four, long cylinders on the screws. Remove the four (4) long, thin cylinders and set aside.

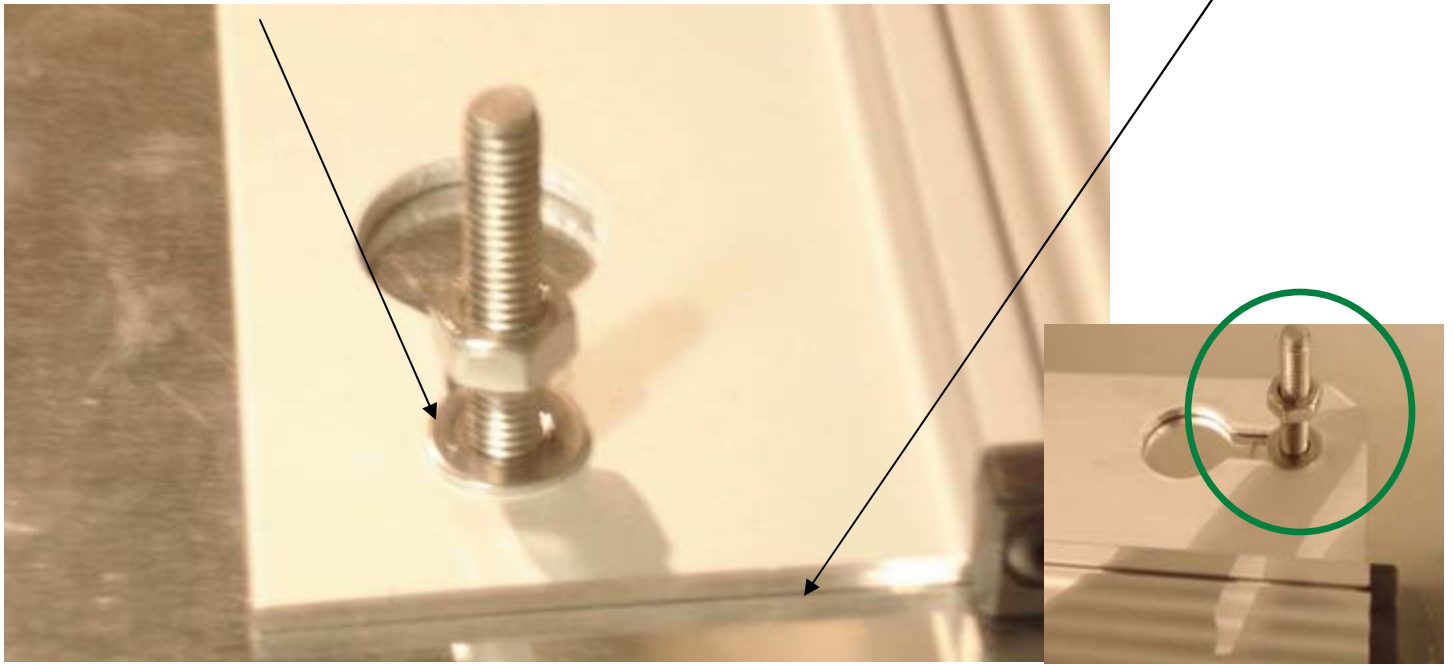


Loosen the nut so it remains approximately 1/4" above the metal base and lift the washers on all four screws.



Spring USA
www.springusa.com
800-535-8974

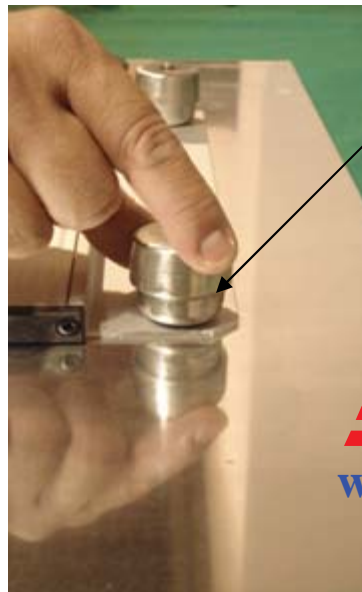
Place the Electric Heating Element onto the base. Make sure that the washers rest above the Heating Element, not underneath it. Notice that the Electric Heating Element sits flush with the metal base.



Tighten the nut to the base of the Electric Heating Element. Continue until all four nuts are flush with the Heating Element.

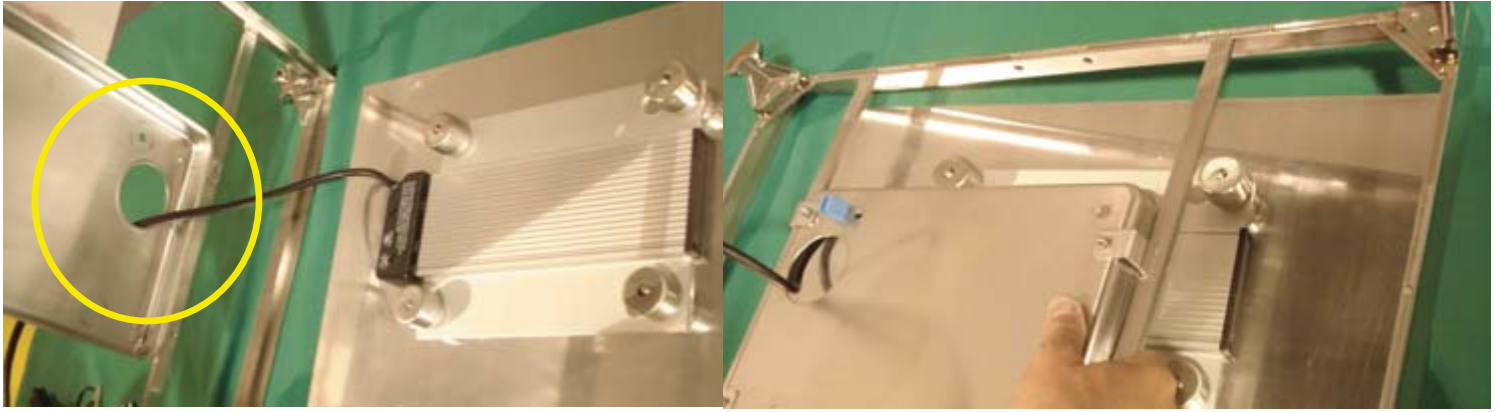


Replace the four long, thin cylinders onto the screws. Then replace four round, thick cylinders.

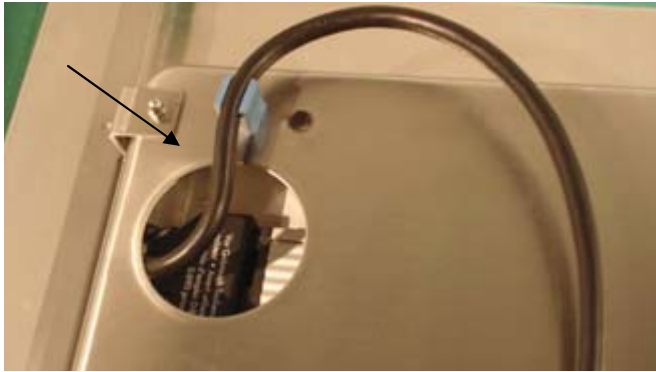


Spring USA
www.springusa.com
800-535-8974

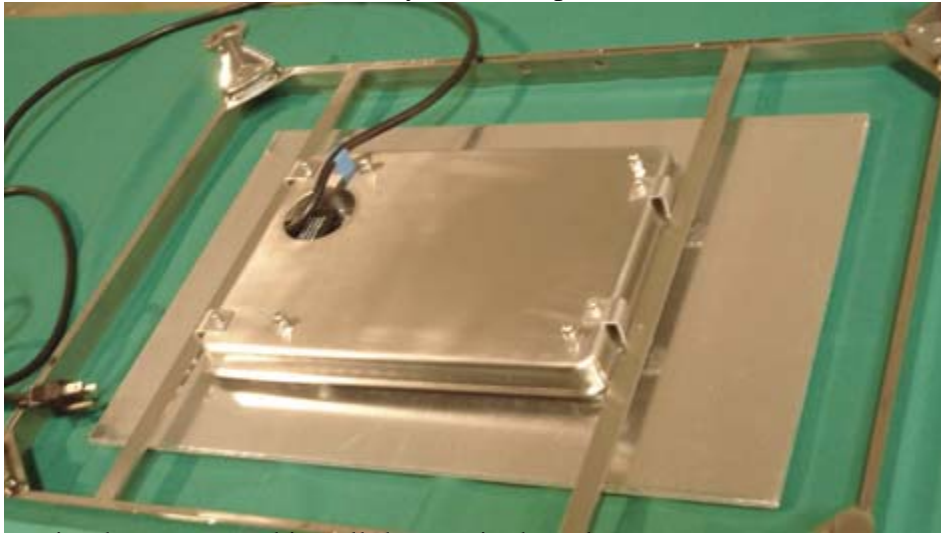
Take the base of the Carving Station and feed the cord for the Electric Heating Element through the precut hole. Feed the cord through the hole. Next, align and lower the base onto the metal plate, making sure to line it up over the long screws.



Feed the cord from the Electric Heating Element into the cord fastener and push until it is secure in the track. While supporting the underside of the base, begin replacing all the thumb screws. Replace all four screws.



Your Carving Station should look like this once you have replaced all four of the thumbscrews.



Flip the carving station base over and install the granite board.

